



SPWLA

—Houston Chapter News

January 2009 LUNCHEON MEETINGS

President

JOE COMISKY
Apache Corporation
2000 Post Oak Blvd. #100
Houston, TX 77056
Office: 713-296-6286
joe.comisky@usa.apachecorp.com

Vice President - Westside

JOSE G. SILVA
Techsia Inc.
10777 Westheimer
Houston, TX 77042
Office: 713-260-9686
jose.silva@techsia.com

Vice President - Northside

DEAN JACKSON
Baker Atlas
17015 Aldine Westfield
Houston, TX 77073
Office: 713-625-6846
dean.jackson@bakerhughes.com

Vice President - Downtown

ANDY MAY
Devon Energy
99 Tree Crest Cir
The Woodlands 77381
Office: 713-265-6126
andy.may@dvn.com

Treasurer

PAUL CONNOLLY
EOG Resources
1325 Bagby
Houston, TX 77002
Office: 713-651-6700
paul_connolly@eogresources.com

Secretary

JESUS SALAZAR
Conoco-Phillips
600 N. Dairy Ashford
Houston, TX 77079
Office: 281-293-1610
jesus.m.salazar@conocophillips.com

Editor

DON HARTMAN
Devon Energy
1200 Smith, Suite 3300
Houston, TX 77210-4616
Office: 713-286-5842
don.hartman@dvn.com

Associate Editor

LINDA MURDOCK
Landmark Graphics
Houston, TX 77042-3051
Office: 713-839-2587
linda.murdock@halliburton.com

Webmaster

JEFF ALFORD
Schlumberger
1325 Dairy Ashford
Houston, TX 77077
Office: 281-285-4938
webmaster@spwla-houston.org

Westside

BP Plaza
Wednesday Jan. 14

Seismic Petrophysics - Integration to Enable Geologically-Sensible Rock Physics: A Gulf of Mexico Demonstration

by Mark G. Kittridge

Northside

Hilton Garden Inn
Wednesday, Jan. 21

Advances in Coring Techniques

by Wade McCutcheon

Downtown

Hess Office
Wednesday, Jan. 28

Haynesville Shale Reservoir Evaluation for Optimized Drilling and Stimulation

by Dan Buller



January 2009

Now that we have finally wrapped up a year many of us won't forget for a variety of reasons, its time to start planning ahead for 2009. Before we do that, looking back briefly on 2008, the Chapter held its Annual Software Show at the Omni Hotel on Wednesday, Dec 10th. Much to the delight of the Chapter and the vendors the event was well received and we thank everyone for participating.

This next year will see a lot of energy and activity going into planning the 2009 50th Anniversary SPWLA Symposium. It will be held at the Marriott Waterway in the Woodlands from June 21st through the 24th. I know many members of this Chapter are intricately involved with planning this event, so keep up the good work and get ready for a busy few months. You can check out their wonderful website at <http://www.spwla2009.com/> for more information.

We are also planning on hosting the Annual Spring Topical Conference on Wednesday, May 13th at the Chevron building in downtown Houston. If you are itching for some petrophysical banter and can't wait until the June symposium then this is the place for you. We typically have 5 to 6 talks on a common subject spanning most of the day. Last year's topic was "Residual Oil Saturation" and amid \$100+ oil we had a great showing. This year's topic has not been finalized, but we seem to be heading towards those highly laminated, gas-saturated, very fine-grained rocks that everyone has been so excited about the past few years. Stay tuned and we'll have more information in next month's newsletter.

We'll also be hosting our usual monthly luncheons at all three locations during the month of January. Please note the change in location for the Northside meeting on Jan 21st to the Baker Atlas Auditorium on Rankin Road. You can also go to the SPWLA Houston Chapter homepage at <http://www.spwla-houston.org> for more information.

Joe Comisky
Houston Chapter President



**Erle was
fiercely independent.**

**At Halliburton
we still are.**

Erle Halliburton built his service company from scratch. He couldn't be bought. He couldn't be discouraged. And the rest is history. But the key to Erle's success was the repeat business of the many independents he served. Halliburton crews would travel any distance and get the job done right. Customer satisfaction was everything. And America's independents weren't disappointed. Though Erle's long gone, he's well represented by the independent-minded people who work here today. If you need us, just call. No job is too big, small, conventional or complex.

Halliburton has the energy to help. To find out how, visit us at www.halliburton.com.

HALLIBURTON

Unleash the energy.™





Westside Luncheon Meeting

Seismic Petrophysics - Integration to Enable Geologically-Sensible Rock Physics: A Gulf of Mexico Demonstration

by

Mark G. Kittridge

Date:	Wednesday Jan. 14	Place:	BP Plaza Conference room on 3rd floor. Westlake 4 200 Westlake Park Blvd.	Reservations:	Email: jose.silva@techsia.com
Time	Lunch: 11:30 am Talk: 12:00 Noon	Price:	Purchase lunch in cafeteria and bring to conference room.	Parking	BP Plaza Garage
Special Instructions	Everyone MUST sign in AND out at the Lobby Security desk! After receiving security badge, get your lunch and come to the 3rd floor. Follow the SPWLA signs to the conference room.				

Abstract

Rock physics relationships are an essential element in the evaluation and modeling of seismic attributes for hydrocarbon exploration. Calibration of seismic amplitude response requires accurate prediction of the expected acoustic properties for reservoir rocks, nonreservoir lithologies (e.g. mudrocks), and pore fluids at varying conditions. The estimation of seismic amplitude variation with offset (AVO) and time-lapse (4D) response is similarly dependent on reliable rock and fluid property information. Our recent experience in a number of global basins has demonstrated the value of an integrated approach to developing rock and fluid acoustic properties for the quantitative interpretation of seismic data.

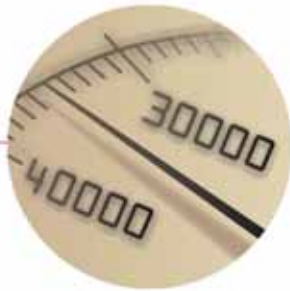
Seismic petrophysics is the work process that integrates lab- and well-derived rock and fluid properties data, ensuring the development of rock physics models with predictive capability. Additional interpretive synergies are realized when the rock properties work is done within a collaborative workflow, leveraging petrographic observations and robust reservoir petrophysics to constrain the development of rock physics models. In this paper, we describe results from such an integrated well-based rock physics modeling study using data from a Gulf of Mexico discovery and offset dry hole.

Tremendous industry interest and speculation have followed the July 1999 announcement of the Thunder (Crazy) Horse (MC778) discovery by BP. Holistic evaluation of the Thunder Horse well data, integrated with existing petrophysical data and rock physics modeling from Metallica (MC 911) yielded numerous insights into sand, mudrock, and fluid acoustic properties. Additionally, pressure data and associated fluid properties inferences helped in the description of Miocene unconfined turbidite reservoir architecture, lateral variability, and aquifer support. Using an established seismic petrophysics workflow, we describe results from the integrated multi-well evaluation.

Biography

Mark G. Kittridge is Principal Technical Expert (Quantitative Interpretation) and Regional Discipline Lead (Petrophysics) with Shell International EP Inc. He joined Shell in 1988 after earning BSc. And Professional Degrees in Geological Engineering from The Colorado School of Mines and a MSc. In Petroleum Engineering from The University of Texas. With Shell, Mark has worked in a variety of well operations and study settings, including carbonates, EOR monitoring, HPHT clastics, and the offshore GoM. His previous assignment was in the Exploration and Deepwater group of EP's Technology R&D unit, working on the development and integration of rock physics models in seismic attribute studies. Mark is chairman of the 2008 SEG Summer Research Workshop, focusing on rock physics modeling.

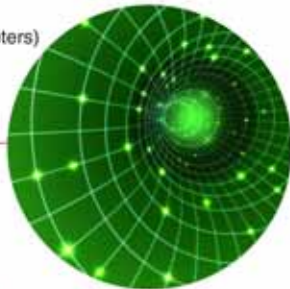
Highest pressure:
30,440 psi (210 MPa)
LWD world record
Gulf of Mexico, 2006



Highest temperature:
379°F (193°C)
LWD world record
North Sea, 2005



Highest dogleg:
61° per 100 feet (33 meters)
LWD world record
Middle East, 2007



Deepest offshore:
34,189 feet (10,421 meters)
Including deepest
LWD data transmission
Gulf of Mexico, 2005



Going to extremes for you

As the world record holder in several **directional drilling services** categories, Weatherford knows that, when it comes to reliability, you have to go to extremes. That's why we build our MWD/LWD and rotary-steerable systems to withstand hostile environments better than the rest.

From routine to extreme, we deliver.

Weatherford's drilling systems greatly reduce well construction costs with faster ROP, higher LWD logging speeds and smoother boreholes—making them ideal for both routine and extreme applications.

To learn more about how our full suite of directional drilling, LWD and rotary-steerable systems are engineered for reliable and repeatable performance, visit weatherford.com.

Our business is built **All Around You.**

Drilling | Evaluation | Completion | Production | Intervention





Northside Luncheon Meeting

Advanced Coring Techniques

by

Wade McCutcheon

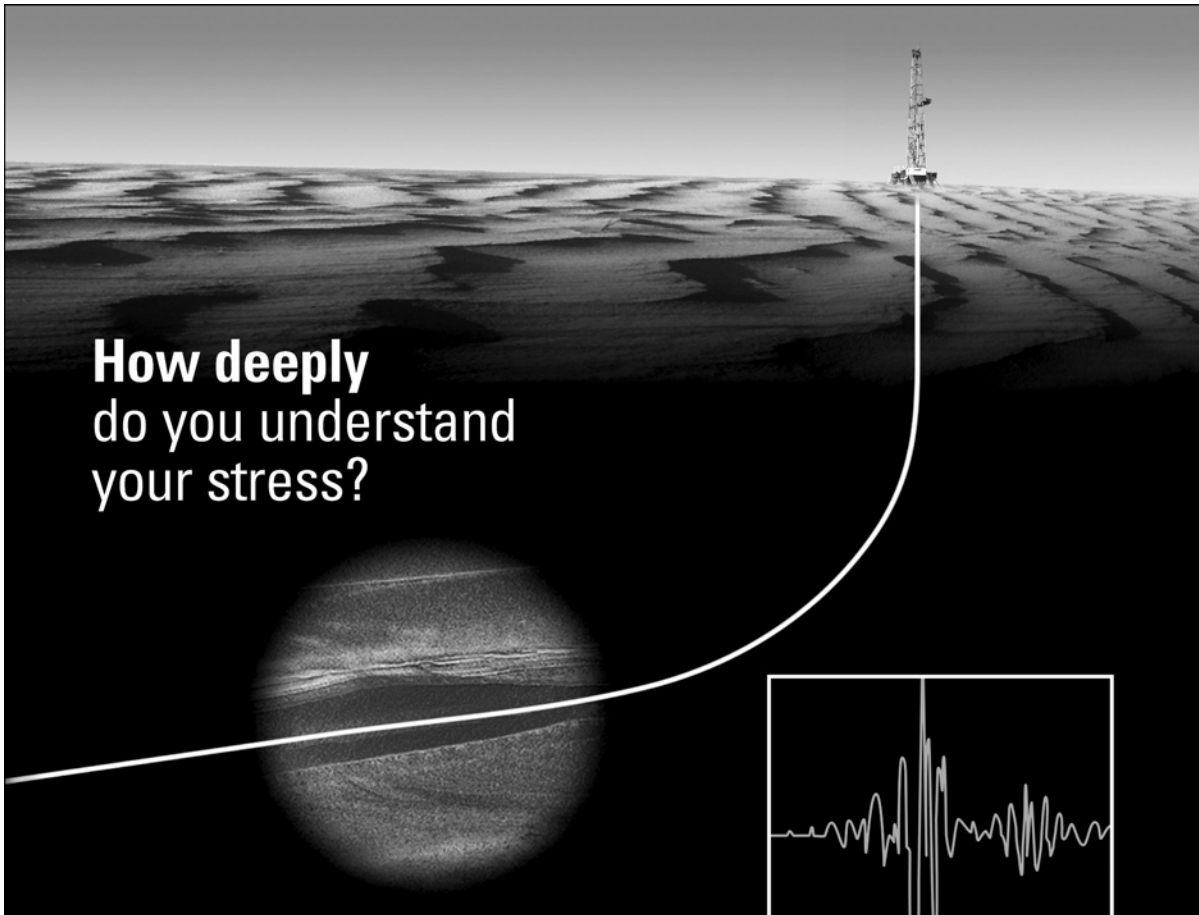
Date:	Wednesday, Jan. 21	Place:	Hilton Garden Inn 15400 JFK Blvd.	Reservations Required:	Reservations must be received NO LATER than Monday, Jan 20th
				Parking:	Reservations must be received NO LATER than Monday, Jan 20th
Time	Lunch: 11:30 am Talk: 12:00 Noon	Price:	Excutive Lunch \$20.		

Abstract

A complete understanding of the reservoir necessitates the need for a quality core and proper core analysis. Several advances have been made in core analysis, but the coring operation itself often uses traditional means with mediocre results. Recent advances in coring technology provides an improvement in core quality and the means for immediate analysis and decision making. These advances include an improved coring assembly, the ability to visualize the core at the rig site for timely decisions, and the means to trap fluid being expelled from the core on its ascent out of the hole. The process of coring is rig intensive and thus a costly operation. These technology advances provide a means to optimize the value of the coring investment by providing quality core and additional answers.

Biography

Wade McCutcheon is the Coring Business Manager for Reservoir Group which includes Diamond Oil Well Drilling Company (DOWDCO) in North America and Corpro internationally. Prior to joining Reservoir Group in 2008, Wade was employed by Schlumberger Oilfield Services for 18 years. He started as a wireline field engineer working primarily in the US Gulf of Mexico. After nine years with the wireline division, Wade became involved with Directional Drilling, Measurement While Drilling, and Logging While Drilling. His last assignment with Schlumberger was Vice President of Drilling and Measurements with responsibility for North America operations.



**How deeply
do you understand
your stress?**

The new Sonic Scanner* acoustic scanning platform enables accurate measurement of the stress-dependent properties of rocks near the wellbore. Now you can make advanced acoustic measurements axially, azimuthally, and radially. The Sonic Scanner multiple depths of investigation, excellent waveform quality, and simple presentations all help to reduce the complexity of sonic logging, without compromising the depth of information.

Get the most comprehensive understanding of your rock, improve your fracture planning, sand control, and perforating design. See stress on a whole new level, with an extra dimension.

Understand your reservoir

*Mark of Schlumberger © 2007 Schlumberger. 07-FE-074

Sonic Scanner

www.slb.com/understand

Schlumberger



Downtown Luncheon Meeting

Haynesville Shale Reservoir Evaluation for Optimized Drilling and Stimulation

by

Dan Buller

Date:	Wednesday, Jan. 28	Place:	Hess Office One Allen Center 500 Dallas Street	Reservations:	Make reservations as early as possible. Call 713-609-5960 and leave a message for SPWLA Reservations or email at Kkemp@hess.com
Time	Lunch: 11:30 am Talk: 12:00 Noon	Price:	\$15 with reservation	Parking:	Regency Parking at 1100 Smith Allen Center Visitor Garage Various outdoor lots
Special Instructions:	One Allen Center is at the corner of Smith and Dallas. The Hess lobby is on the second level adjacent to the Smith Street entrance. You will need to check in through Security. Please arrive prior to 11:30 am to allow time to check in and get to the meeting room. There are numerous parking places in the area, a few of which are listed above.				

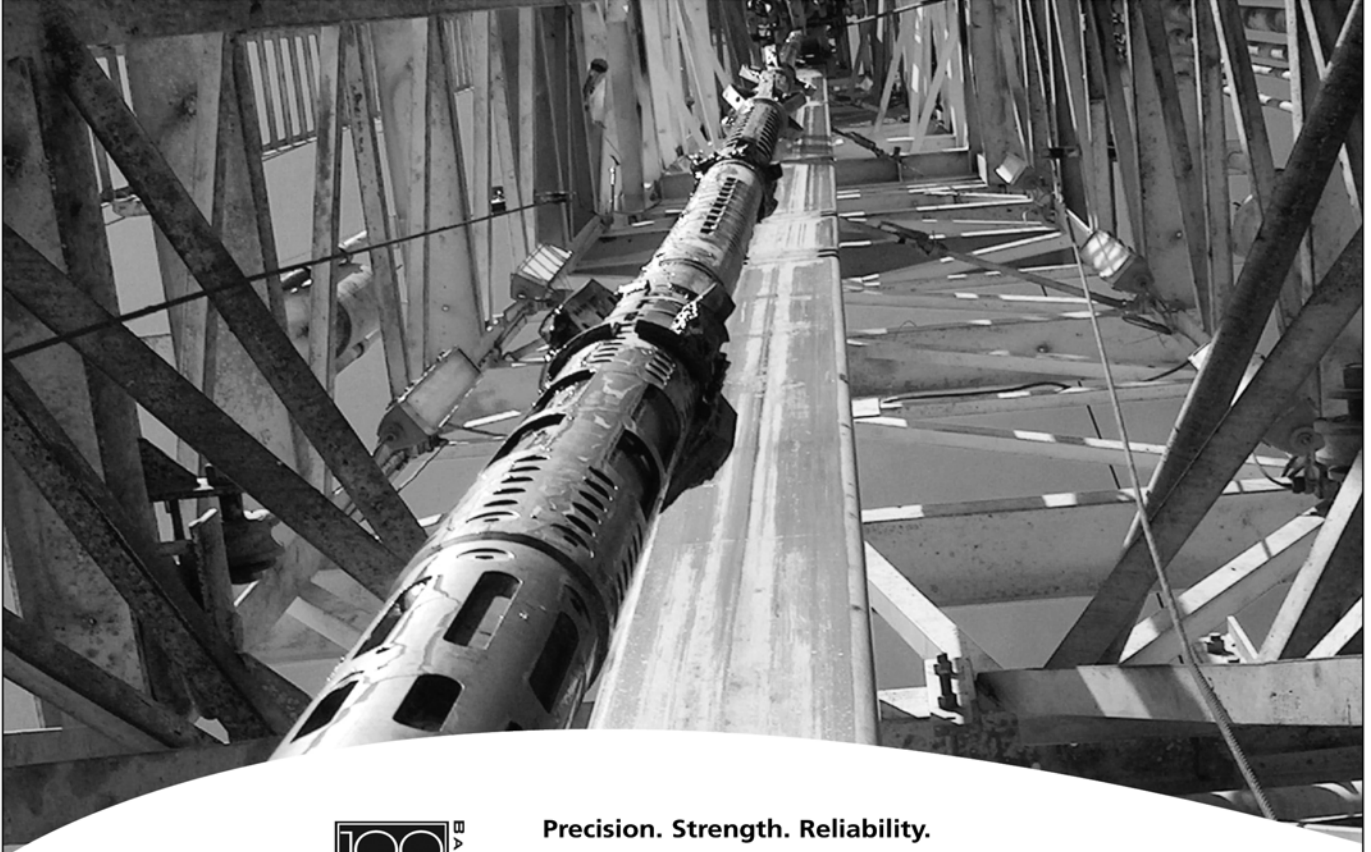
Abstract

Recent results from numerous vertically drilled Haynesville shale wells have demonstrated excellent horizontal economic viability when proper candidate recognition formation evaluation is performed and when crucial fracture planning information is obtained. Optimized techniques are presented to aid the geologic and completion teams in picking the best intervals to test vertically and ultimately offset horizontally. Also, where best to target horizontally if there is more than one shale interval present, and finally, determining the horizontal well's optimum directional azimuth for subsequent transverse fracs. Log information from traditional sources along with dipole sonics, spectral gamma ray, magnetic resonance, and borehole imaging are used to address specific applications.

Biography

Dan Buller has 28 years of formation evaluation experience spread between Schlumberger, Numar, and Halliburton. He has specialized in Southeast U.S. on-shore reservoirs since 1988 and has been employed by Halliburton since 1997. He is currently working as Principle Petrophysicist for Halliburton's Southeast Technology Team and is based in Shreveport, LA. He has published papers in JPT, World Oil, and The Oilfield Review. Dan obtained a BS degree in Physics and Math in 1980 from Nebraska Wesleyan University, and a MS in Physics in 1981 from Kansas State University. He is a member of SPE, AAPG, & SPWLA.

How did we make the Best – Better?



Fast, one-pass acoustic

Precision. Strength. Reliability.

The XMACSM F1 high-performance acoustic logging service from Baker Atlas is not only the most accurate in the industry – but now logs even faster.

Only one logging pass is needed to acquire monopole, dipole and cross-dipole data – and depth corrections between runs are not required.

And with a compressional strength of 45,000 pounds, we can log even your most complex wells pipe conveyed.

You can better evaluate your reservoir, reduce your risk and maximize your hydrocarbon recovery while saving valuable rig time by choosing the best acoustic logging service in the industry – XMAC F1.



Baker Atlas

The BEST Choice

**Real-time
fluid analysis,
clean PVT samples.**

MRILab™ service uses magnetic resonance imaging to distinguish between oil-based mud filtrate and native crude. And it gives you real-time, laboratory-quality estimates of your crude's viscosity and gas/oil ratio. You get the measurements in minutes, while the **RDIT™** assembly is downhole.

Halliburton has the energy to help.

Call your representative about running the new

MRILab service with RDIT tool or visit us at

www.halliburton.com.

Unleash the energy.™



HALLIBURTON

Production Optimization

© 2008 Halliburton. All rights reserved.

Our focus is Client Satisfaction!



**And our ISO 9001:2000
Quality Management System
Proves It!**

As the recognized leader in core analysis and formation characterization, Core Lab's Houston Advanced Technology Center is pleased to announce that our Quality Management System has been ISO 9001:2000 certified. Our laboratory provides state of the art measurements with unmatched quality control and equipment calibration standards.

At Core Lab every job concludes with a customer feedback survey. We are constantly working to enhance customer satisfaction and continue to improve our performance.



Core Lab
RESERVOIR OPTIMIZATION
ISO 9001:2000

No one has more customer focused core and reservoir fluid based solutions for optimizing your reservoir.

To learn about our customer focused Quality Management System, please contact Core Lab.
(713) 328-2673 psinfo@corelab.com

© 2008 Core Laboratories. All rights reserved.



**The World Leader in
Digital Data Conversion
and Management**

- 400,000 Wells in digital format — Over 1,000,000 Logs
- 56,000 Directional Surveys
- 1,300,000 Rasters
- Over 38,000 Gulf of Mexico Wells
- All Gulf of Mexico Logs provided in OTF since 1996 — LWD & Wireline
- Well Log & Map Digitizing using IHS Energy's Proprietary Data Capture System
- Petrophysical Data Processing providing Workstation-Ready Data



IHS ENERGY | Contact us at: 504.581.3282

www.IHSLogNet.com

PathFinder® LWD Sonic Services

Highly reliable, accurate and versatile, the PathFinder LWD Sonic Service provides wireline quality compressional and shear slowness data.

- Standard PathFinder Sonic tools provide real-time compressional and fast shear slowness data.
- Extended measurement e-sonic tools operate at 7 kHz and 15 kHz frequencies to provide slow shear measurements and real-time compressional measurements.

Reliability, Accuracy, Versatility. We Deliver.

For more information contact your local
PathFinder Representative

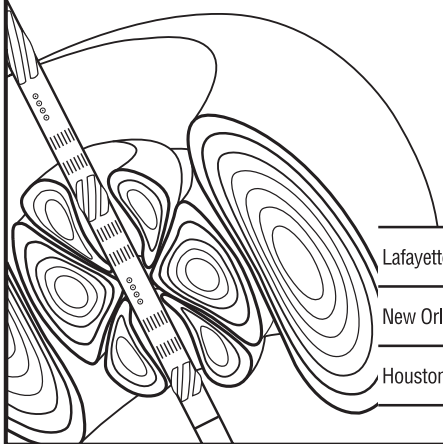
PATHFINDER®

www.pathfinderlwd.com

© 2004 PathFinder Energy Services, Inc. All Rights Reserved

LEADING EDGE FORMATION EVALUATION

- New MPR™ system provides increased resistivity accuracy
- Re-entry services enhance asset value
- Reservoir navigation for optimum horizontal well placement
- Coring services obtain quality formation samples



INTEQ

Lafayette: (318) 856-7201

New Orleans: (504) 525-1197

Houston: (713) 625-4200



"Setting The New Service Standard"

Providing:
OPEN HOLE LOGGING Services
to Mid-Continent Areas of
Oklahoma/Arkansas
Kansas and North Texas

Tucker Wireline delivers:

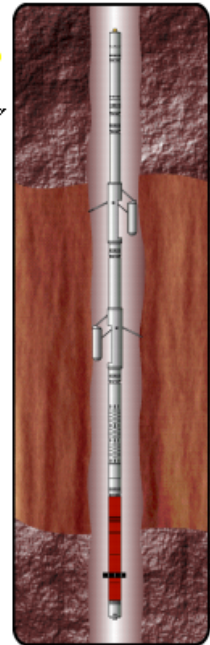
- **"One-Run"** Stack Technology
- **Quality** Data in customer formats
- **Efficient, Reliable Service**
- **Web Based** delivery of logs

Contact

U.S. Business Development Team
Tucker Wireline Services, U.S.
Houston, Texas
Office: 281-442-9095 ext. 206
Email: infoUSA@TuckerEnergy.com

Tulsa Sales: 918-252-5416, Ext. 141
Tulsa Operations: 918-252-5416, Ext. 160
Oklahoma City Sales: 405-514-0643

www.tuckerwireline.com



Quad Stack
55.1 ft

Technical Training
and Consulting
for the
Energy Industry



SMOLEN ASSOCIATES

JAMES J. SMOLEN

2122 N. Fountain Valley
Missouri City, Texas
U.S.A. 77459-3647

281-438-1141
281-438-8846 FAX
smolen@pdq.net

NMR Petrophysics, Inc.

- Independent NMR Job Planning, Data Processing, QC, Interpretation of all data types, (MRIL, Prime, CMR, CMR Plus), from all service companies.
 - Synthetic NMR from standard logs
 - NMR Training, Log-Core Integration
 - Petrophysical Studies, Integrated Studies
- IN-HOUSE & CUSTOMIZED TRAINING ON NMR JOB PLANNING, QC, PROCESSING & INTERPRETATION**
www.nmrpetrophysics.com

brian@nmrpetrophysics.com

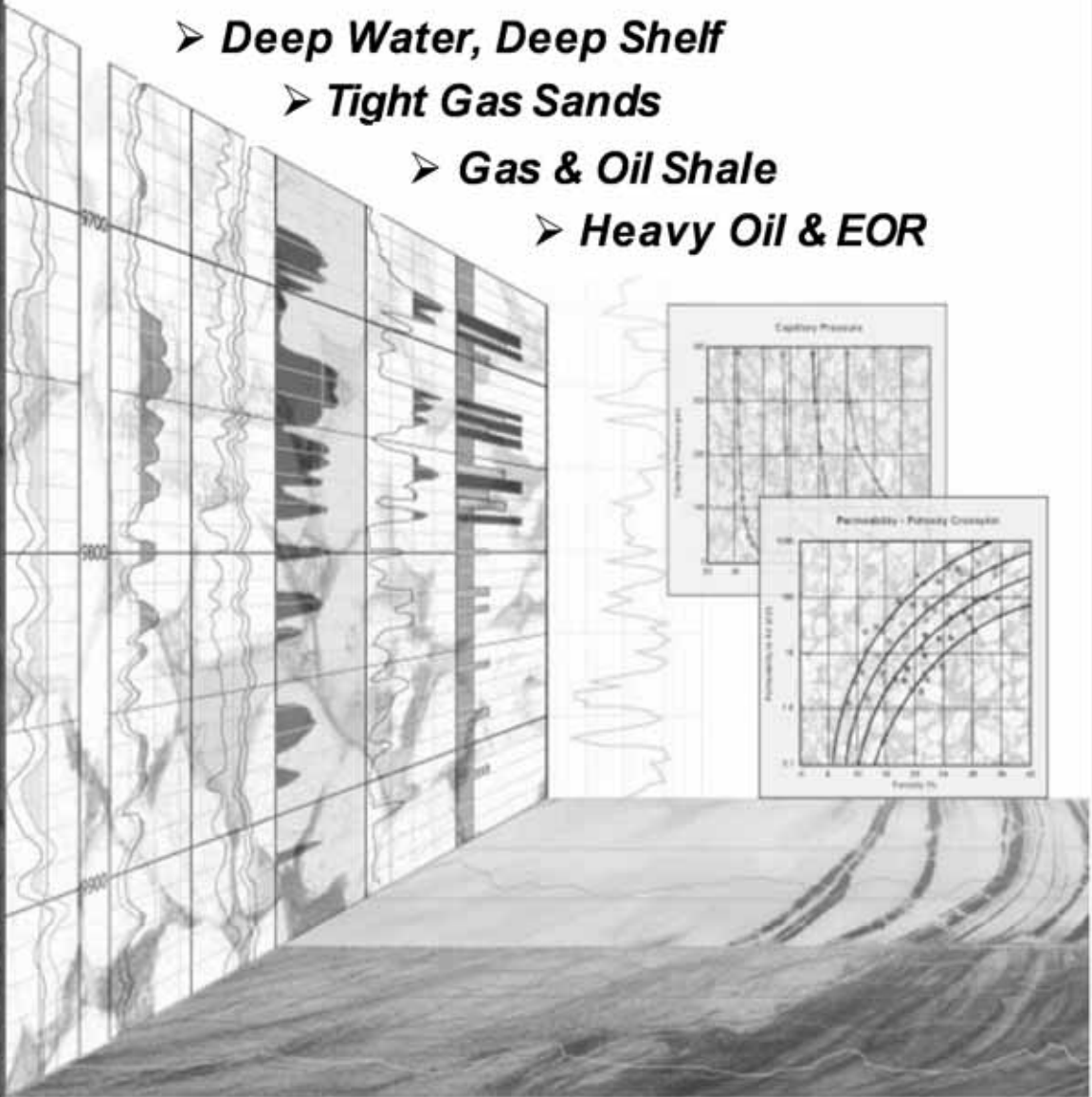
281-468-7755

RESERVOIR DESCRIPTION
RESERVOIR ENHANCEMENT
PRODUCTION ENHANCEMENT
RESERVOIR MANAGEMENT

ROCK-BASED PETROPHYSICAL SOLUTIONS

Core Lab offers a unique approach to petrophysical evaluations for even the most challenging reservoir.

- **Deep Water, Deep Shelf**
- **Tight Gas Sands**
- **Gas & Oil Shale**
- **Heavy Oil & EOR**



Pay Recognition Core-Log Data Integration Improved Reservoir Estimates
Completion Recommendations Reservoir Performance Prediction

Answers From The Rocks

Houston (713) 328-2121

www.corelab.com